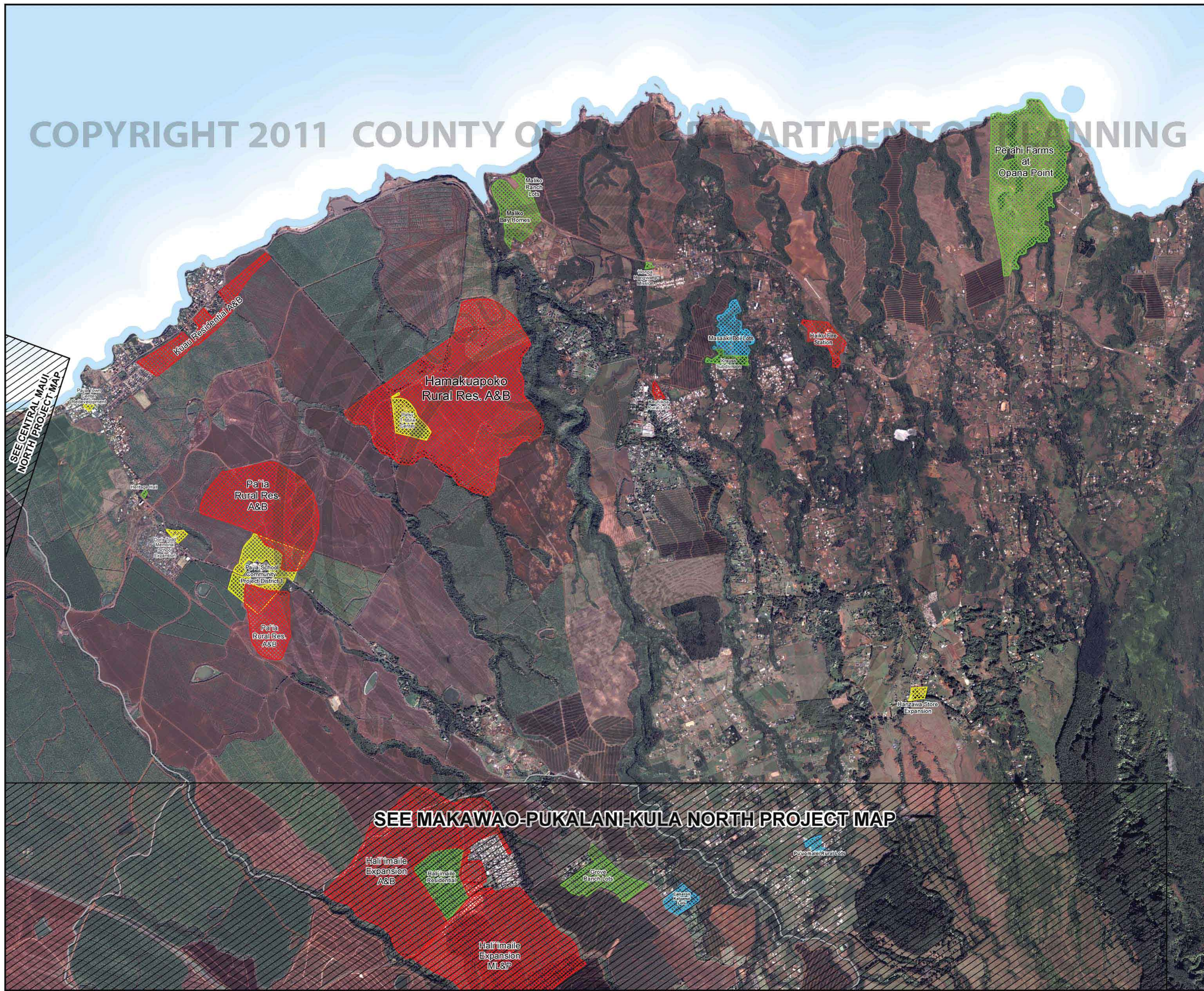


Projects by Geographic Map Extent	Unit Types		
	Single Family	Multi-Family	Time Share and Hotel
Recently Completed			
Masaaki Doi Lots	3	0	0
Pu'uomalei Rural Lots	3	0	0
TOTAL	6	0	0

Planned/Committed			
Krauss Subdivision	4	0	0
Maliko Bay Homes	8	0	0
Maliko Ranch Lots	3	0	0
Pe'ahi Farms at Opana Point	16	0	0
SUB-TOTAL	31	0	0

Planned/Designated			
Manuwa Store Expansion	3	0	0
Pa'ia School Community Project District 1	330	0	0
Patsy T. Mink Center	16	0	0
SUB-TOTAL	349	0	0

Proposed			
Hamakuapoko Rural Res. A&B	650	0	0
Kauhikoo Rural Lots	6	0	0
Kuau Residential A&B	140	0	0
Pa'ia Rural Res. A&B	525	0	0
SUB-TOTAL	1,321	0	0
TOTAL	1,701	0	0



SEE CENTRAL MAUI NORTH PROJECT MAP

SEE MAKAWAO-PUKALANI-KULA NORTH PROJECT MAP

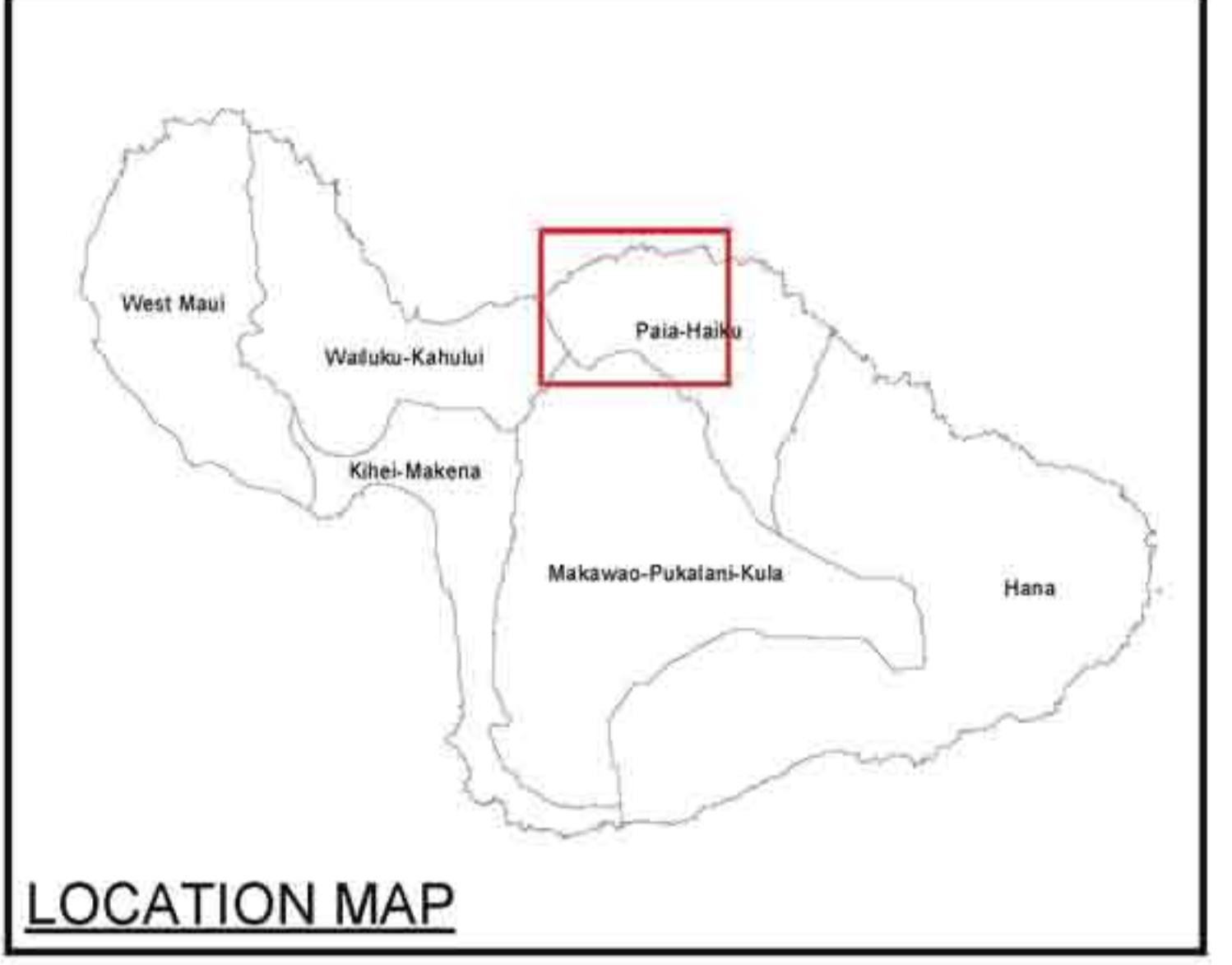
Pa'ia - Ha'iku Development Projects

Legend

Development Projects

Growth Classes

- Recently Completed
- Planned/Committed
- Planned/Designated
- Proposed
- Proposed Roads
- Phased Development
- Community Plan Area Boundaries



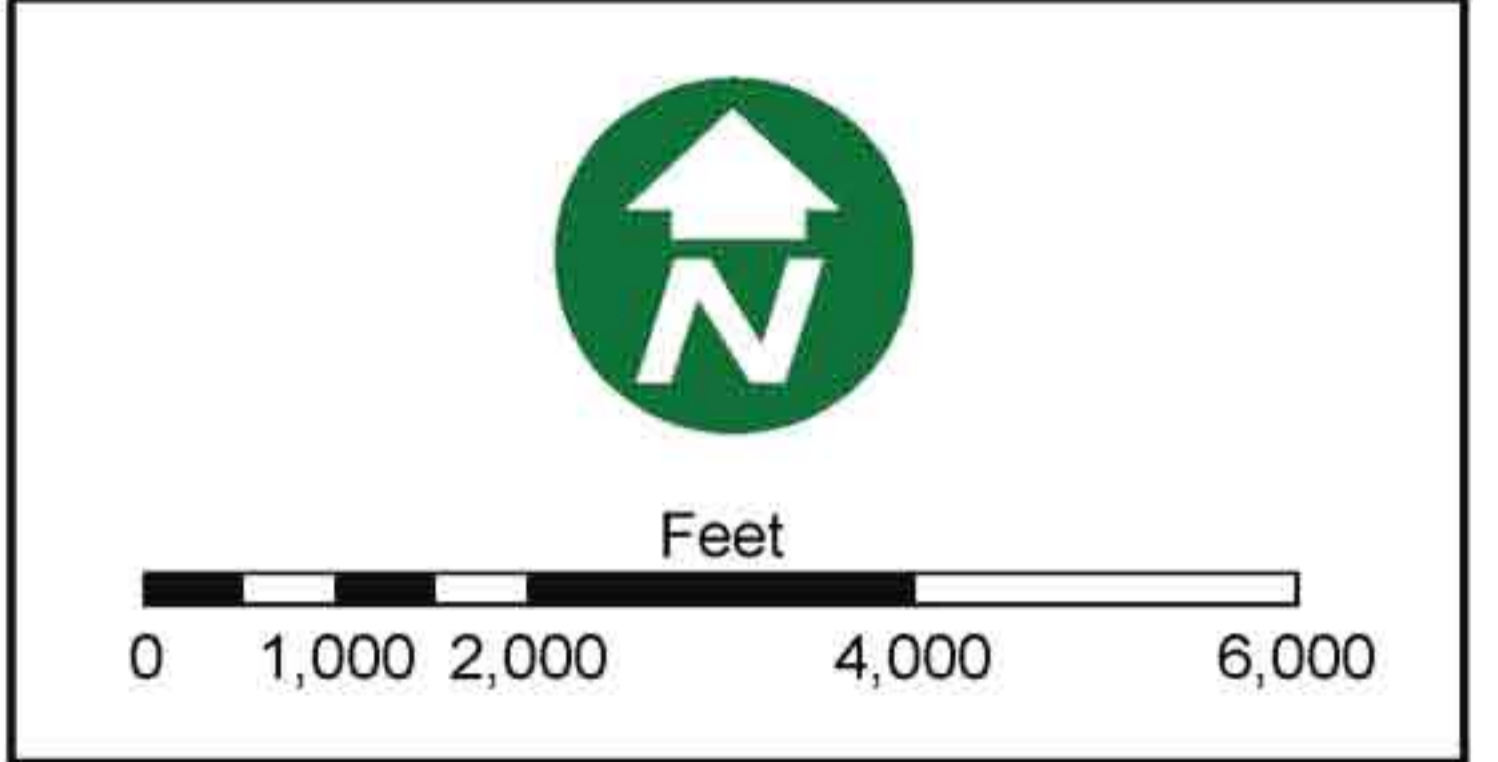
Copyright © February 15, 2011

All rights reserved. No part of this product shall be modified without prior written approval from the Planning Department. For information regarding this product please contact the GIS section, Long Range Division, Maui County Planning Department. Copies of this product are available from the Long Range Division for a fee.

Product Code: M-JG/CET_20110215-D

Includes material © 2005 DigitalGlobe, Inc. ALL RIGHTS RESERVED.

This is not a zoning map or community plan map. Please contact the Planning Department for Zoning and Community Plan information.



PREPARED BY:

Long Range Planning Division
Department of Planning
County of Maui
250 South High Street
Wailuku, Hawaii 96793

The development projects shown are those that have come to the attention of the Department of Planning. There are certain to be other developments being contemplated or planned by private individuals or corporations of which the Department has not been informed. Further, the Department is not attempting to track housing projects smaller than 6 dwelling units and subdivisions of less than 4 lots. Therefore, this is not a complete depiction of the development projects for the county.

Projects identified as "Planned/Committed" have the appropriate conforming Community Plan and zoning entitlements, are approved agricultural subdivisions, are approved 2010/11 projects, or are Department of Hawaiian Homelands (DHL) projects. Projects identified as "Planned/Designated" have urban or rural Community Plan designations but not the conforming zoning entitlements to proceed. Projects identified as "Proposed" are currently lacking urban or rural Community Plan designations. Projects identified as "Recently Completed" include those where the subdivision process is complete, total build-out of the project has been reached or nearly reached, and real property is being actively marketed. Further, these projects remain "Recently Completed" until other map layers show the completed project.